

# Hochfeldalm

inn in St. Johann in Tirol



**88 %**  
144 Ratings

**TY**

Berglehen 45-47 · A-6380 St. Johann in Tirol · [info@hochfeldalm.at](mailto:info@hochfeldalm.at) · 0043 5352 62864  
Additional information at <https://hochfeldalm.at/>



# Hochfeldalm

## inn in St. Johann in Tirol

The HOCHFELDALM is centrally located on the Kitzbüheler Horn, in the SKI and hiking area St. Johann in Tirol.

In winter we are right on the ski slope.

In summer we are in the middle of the hiking paradise "Kitzbüheler Horn", and are directly accessible by car.

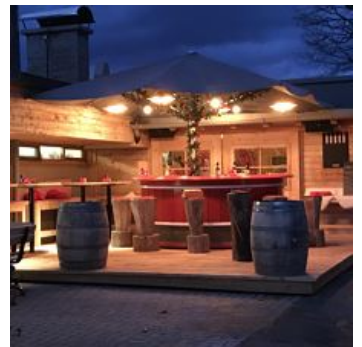
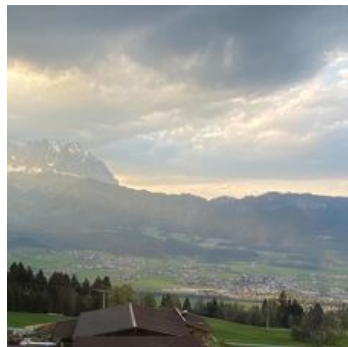
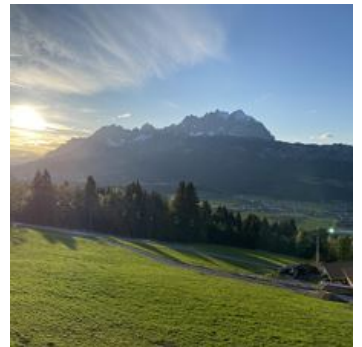
A must for skiers and hikers!

Our sun terrace with a magnificent view of the Wilder Kaiser invites you to take a break ....

The rooms are located directly under the inn and are simply and comfortably furnished.

Good Tyrolean - Bavarian cuisine.

Company and family celebrations are sincerely welcome!



mountain location · right on the slope · quiet location · on the hiking path · near the forest · infrared cabin

## Rooms and Apartments

### Current Offers

#### single room with shower, WC



1 Person · 1 Bedrooms · 12 m<sup>2</sup>

Our single rooms are simply equipped with shower/toilet. Enjoy the marvelous view of the "Wilder Kaiser" and the surrounding mountains.

ab  
**€ 50,00**

per person on 28.01.2023

**TO THE OFFER**

#### double room with shower, WC



1-2 Personen · 1 Bedrooms · 18 m<sup>2</sup>

Our double rooms are simply equipped with shower/toilet. Enjoy the marvelous view of the "Wilder Kaiser" and the surrounding mountains.

ab  
**€ 50,00**

per person on 28.01.2023

**TO THE OFFER**

### Apartment, shower or bath, toilet, terrace



1-4 Personen · 1 Bedrooms · 60 m<sup>2</sup>

Very spacious and comfortably furnished apartment. In summer in the middle of the hiking area, in winter directly at the ski slope. Ski-in ski-out! The apartments are located in the annex building.

ab  
**€ 170,00**

per apartment on 28.01.2023

**TO THE OFFER**

### Apartment, shower or bath, toilet, balcony



1-4 Personen · 1 Bedrooms · 72 m<sup>2</sup>

Very spacious and comfortably furnished apartment. In summer in the middle of the hiking area, in winter directly at the ski slope. Ski-in ski-out! The apartments are located in the annex building.

ab  
**€ 180,00**

per apartment on 28.01.2023

**TO THE OFFER**

### Apartment, shower or bath, toilet, balcony



1-4 Personen · 1 Bedrooms · 75 m<sup>2</sup>

Very spacious and comfortably furnished apartment. In summer in the middle of the hiking area, in winter directly at the ski slope. Ski-in ski-out! The apartments are located in the annex building.

ab  
**€ 180,00**

per apartment on 28.01.2023

**TO THE OFFER**

### Apartment, shower or bath, toilet, balcony



1-6 Personen · 2 Bedrooms · 82 m<sup>2</sup>

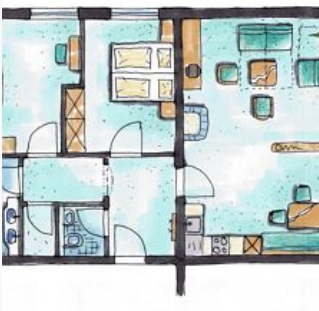
Very spacious and comfortably furnished apartment. In summer in the middle of the hiking area, in winter directly at the ski slope. Ski-in ski-out! The apartments are located in the annex building.

ab  
**€ 275,00**

per apartment on 28.01.2023

**TO THE OFFER**

### Apartment, shower or bath, toilet, balcony



1-6 Personen · 2 Bedrooms · 90 m<sup>2</sup>

Very spacious and comfortably furnished apartment. In summer in the middle of the hiking area, in winter directly at the ski slope. Ski-in ski-out! The apartments are located in the annex building.

ab  
**€ 275,00**

per apartment on 28.01.2023

**TO THE OFFER**

## Conditions

The prices are incl. breakfast and excl. taxes.

## Hochfeldalm

inn in St. Johann in Tirol

Berglehen 45-47

A-6380 St. Johann in Tirol

Email: [info@hochfeldalm.at](mailto:info@hochfeldalm.at)

Phone: 0043 5352 62864

<https://hochfeldalm.at/>