

Haus Sonne

holiday apartment in Erpfendorf



Froidweg 6 · A-6383 Erpfendorf · roswitha@hechenbichler.at · +43 5352 8276
Additional information at <https://www.hechenbichler.at>

Haus Sonne

holiday apartment in Erpfendorf

Our house Sonne is the ideal and central starting point for fantastic trips to the Kaisergebirge, the Kitzbüheler Horn, the Steinplatte, the wild-romantic Gießbachklamm, the nature-preserving Haslerschlucht as well as the fashionable Kitzbühel with the breathtaking, legendary Streif on the Hahnenkamm. All our 3 rooms are comfortably furnished in Tyrolean style with showers, toilets, satellite TV and free internet access. From the balcony you can enjoy the panorama of the imposing Kitzbüheler Alps and the majestic Wilder Kaiser. New in 2020: Appartement for 4

In the morning we serve a rich, varied breakfast, so that you can begin your holiday in Erpfendorf relaxed and strengthened and are fit for the nearby golf course, the equestrian facilities, as well as the cross-country ski run, which is in close proximity to our house Sonne.



right on the bike path · quiet location · mountain location · meadowlands · right at the cross-country ski trail · near the forest

Rooms and Apartments

Current Offers

Apartment, shower, toilet, 2 bed rooms



The apartment is on the 2nd floor of our house, it is new and has 2 bedrooms with double beds, a spacious bathroom and a kitchen with a cozy dining area; as well as a very spacious balcony

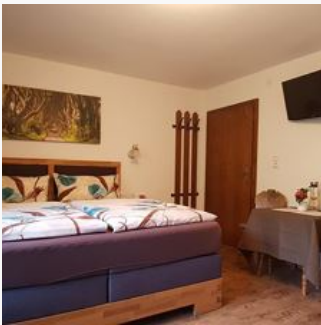
1-4 Personen · 2 Bedrooms · 78 m²

ab
€ 120,00

per apartment on 12.10.2024

[TO THE OFFER](#)

Triple room, shower, toilet



Cozy rooms in tyrolian style.

1-3 Personen · 1 Bedrooms · 25 m²

ab
€ 42,00

per person on 12.10.2024

[TO THE OFFER](#)

Double room, shower and bath, toilet



Cozy rooms in tyrolian style. All rooms with mountain view and Wi-Fi.

ab
€ 45,00

per person on 12.10.2024

TO THE OFFER

1-2 Personen · 1 Bedrooms · 25 m²

Double room, shower and bath, toilet



Cozy rooms in tyrolian style. All rooms with mountain view and Wi-Fi.

1-2 Personen · 1 Bedrooms · 25 m²

Double room, shower and bath, toilet



Cozy rooms in tyrolian style. All rooms with mountain view and Wi-Fi.

1-2 Personen · 1 Bedrooms · 25 m²



Conditions

Dogs (depending on size) costs per day without lining between € 10,- until € 15,-.
In the appartement there are no dogs aloud.

Haus Sonne

holiday apartment in Erpfendorf

Froidweg 6

A-6383 Erpfendorf

Email: roswitha@hechenbichler.at

Phone: +43 5352 8276

<https://www.hechenbichler.at>