

Hauserbauer

farm, farmhouse in Waidring



Hausergasse 3 · A-6384 Waidring · teresa.exenberger@gmx.at · +43 676 7026219

Tourismusverband PillerseeTal
Dorfplatz 1
6391 Fieberbrunn
AUSTRIA

Tel. +43 5354 56304
Fax +43 5354 56304 750
info@pillerseetal.at
www.pillerseetal.at

UID-Nr. ATU53749804
Raiffeisenbank Kitzbühel - St. Johann eGen
BLZ: 36263 / BIC: RZTIAT22263
IBAN: AT38 3626 3000 0422 1834

Hauserbauer

farm, farmhouse in Waidring

Our farm is located only 2 km from the town. We are an organic farm with dairy cattle. In winter possibility to use the cross-country ski run. The cable car station is only 1 km from our farm. Easy accessibility of the farm in summer and winter. Sheets and towels are available for free. Bread delivery service on request.

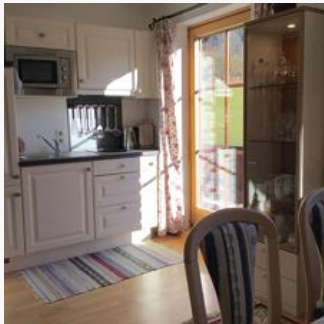


meadowlands · right on the bike path · outskirts of town · right at the ski-bus/ hiking-bus/ bus stop · right at the cross-country ski trail

Rooms and Apartments

Current Offers

Apartment, shower, toilet, 2 bed rooms



1-4 Personen · 2 Bedrooms · 55 m²

Cozy, 55 square meter apartment on the 2nd floor with balcony and a beautiful view of the Loferer mountains and the Steinplatte. The apartment offers 2 separate sleeping rooms, full equipped kitchen, s...

ab
€ 25,00

per person on 25.01.2025

TO THE OFFER

Conditions

Free parking space available.

Hauserbauer

farm, farmhouse in Waidring

Hausergasse 3

A-6384 Waidring

Email: teresa.exenberger@gmx.at

Phone: +43 676 7026219