

Flicklhof

farm, farmhouse in Hopfgarten im Brixental



Grafenweg 49 · A-6361 Hopfgarten im Brixental · martina.sieberer@tsn.at · 0043 664 73820348



Ferienregion Hohe Salve
6300 Wörgl, Innsbrucker Str. 1
AUSTRIA

Telefon: +43 57507 7000
Fax: +43 57507 7020
info@hohe-salve.com
www.hohe-salve.com

UID: ATU44549501
Gerichtsstand: Bezirksgericht Kufstein
Raiffeisenbank Wörgl
IBAN: AT64 3635 8000 0068 9315 / BIC: RZTIAT22358

Flicklhof

farm, farmhouse in Hopfgarten im Brixental

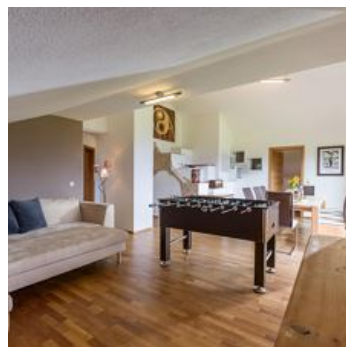
Welcome to the Flicklhof, a working farm in a wonderfully secluded location between two ski areas and with a magnificent view. You enter the flat on the first floor of the house, via an external staircase and a private entrance.

The large living/dining area is directly connected to the open kitchen, which is well equipped so that you can make yourself comfortable for longer periods of time.

In addition, there are 2 bedrooms and a bathroom, which are accessible via the wide long corridor. The balcony is accessible from several rooms. The stairs take you to the second floor of the house, here another spacious living/dining area with access to the balcony awaits you. There are also 3 more bedrooms with double beds and another bathroom here.

The SkiWelt Wilder-Kaiser -Brixental ski area can be reached in just 10 minutes by car.

The area has a lot to offer all year round and you can start right from the property by bike or on foot. The cross-country skiing trail also passes ...



Rooms and Apartments

Current Offers

Apartment, shower, toilet, 4 or more bed rooms



1-10 Personen · 5 Bedrooms · 180 m²

Flicklhof

farm, farmhouse in Hopfgarten im Brixental

Grafenweg 49
A-6361 Hopfgarten im Brixental
Email: martina.sieberer@tsn.at
Phone: 0043 664 73820348