

Berghütte Kelchsau

mountain hut in Kelchsau



Langer Grund 38a · A-6361 Kelchsau · rosemarie.werlberger@live.at · +43 664 1537710



Ferienregion Hohe Salve
6300 Wörgl, Innsbrucker Str. 1
AUSTRIA

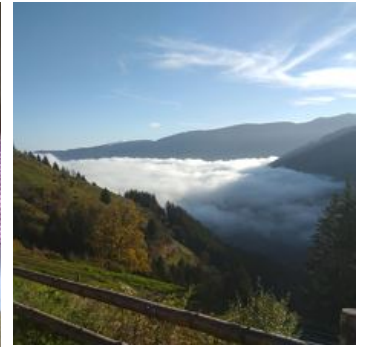
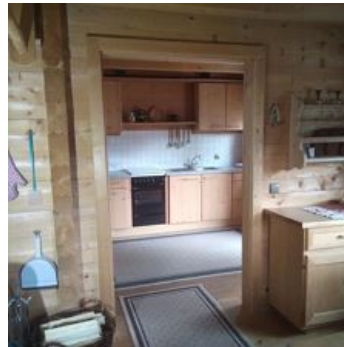
Telefon: +43 57507 7000
Fax: +43 57507 7020
info@hohe-salve.com
www.hohe-salve.com

UID: ATU44549501
Gerichtsstand: Bezirksgericht Kufstein
Raiffeisenbank Wörgl
IBAN: AT64 3635 8000 0068 9315 / BIC: RZTIAT22358

Berghütte Kelchsau

mountain hut in Kelchsau

The Kelchsau mountain hut is located in an idyllic and secluded location at 1,440 metres surrounded by alpine pastures and forests in the midst of the Kitzbühel Alps. A breathtaking view of our Schrotter-Wildkaralm and the surrounding mountains invites you to linger and relax and gives you a feeling of grounding. From the end of May to the end of September, you can watch our cows and calves enjoying their summer rest - the calf barn is also located right next door. The Kitzbühel Alps are characterised by their natural grasslands and forests. In the village of Kelchsau, which is about 7 km away, you will find a grocery shop and an inn. In our region Langer and Kurzer Grund you will also find some regional inns and is an optimal starting point for hikes or real summit experiences. Also worth a trip is the most beautiful panoramic mountain in Tyrol, the Hohe Salve, with the highest pilgrimage church in Austria. Nearby is the Salvenland bathing lake and leisure complex, as well as a golf ...



Rooms and Apartments

Current Offers

Holiday home, bath, toilet, 2 bed rooms



1-6 Personen · 2 Bedrooms · 42 m²

Our cabin is a wooden log building with 42 m². One bedroom with double bed is on the ground floor and another 4 beds are in the attic (165 cm high). In the cosy parlour there is a wood-burning stove...

ab
€ 227,14

per apartment on 12.10.2024

TO THE OFFER

Conditions

Pets welcome - € 8,00 per day and per pet

Berghütte Kelchsau

mountain hut in Kelchsau

Langer Grund 38a

A-6361 Kelchsau

Email: rosemarie.werlberger@live.at

Phone: +43 664 1537710