

Appartement Stöplhof

holiday apartment in Kirchbichl



Schöpfweg 2 · A-6322 Kirchbichl · stoepflhof@gmx.at · 0043 664 3504133



Ferienregion Hohe Salve
6300 Wörgl, Innsbrucker Str. 1
AUSTRIA

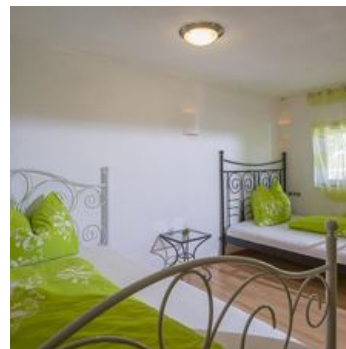
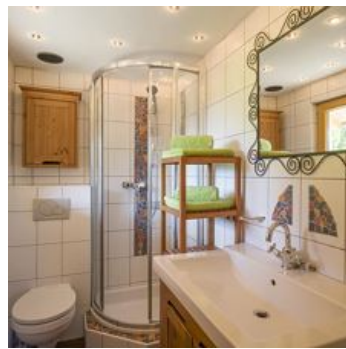
Telefon: +43 57507 7000
Fax: +43 57507 7020
info@hohe-salve.com
www.hohe-salve.com

UID: ATU44549501
Gerichtsstand: Bezirksgericht Kufstein
Raiffeisenbank Wörgl
IBAN: AT64 3635 8000 0068 9315 / BIC: RZTIAT22358

Appartement Stöplhof

holiday apartment in Kirchbichl

Stöplhof farm is situated at the edge of Kirchbichl in a quiet and very recreational area. Our apartment is in the adjacent building and sleeps 2 - 5 persons. There is a parking place, free Wi-Fi and a bakery in close vicinity. We also offer our own produce such as dairy products, eggs, and more. In winter the ski area SkiWelt Wilder Kaiser Brixental can be reached in only a 5-minute drive (to the Salvista cable car in Itter). Use the free ski bus - the bus stop is only a short walk from the house. The next neighbouring farm is 1 km away. In summer countless hiking and cycling options await you right from the door (cycling path close by) Whoever appreciates country life is right to stay with us. We are looking forward to welcoming you as our guest! The Breitenlechner family



near the forest · on the hiking path · outskirts of town · quiet location · right on the bike path · right at the ski-bus/ hiking-bus/ bus stop · meadowlands

Rooms and Apartments

Current Offers

Apartment, shower, toilet, 1 bed room



The apartment is situated in the outbuilding of Stöplhof farm (1st floor) and offers a bedroom with two French beds (double beds), a living room with a convertible sofa, a kitchenette and a bathroom ...

ab
€ 60,00

per apartment on 15.01.2021

TO THE OFFER

1-4 Personen · 1 Bedrooms · 40 m²

Conditions

Price includes: electricity, water, heating not included: tourist tax (EUR 1,00 per night), final cleaning EUR 30,00 Pets are allowed after prior request

Appartement Stöplhof

holiday apartment in Kirchbichl

Schöplweg 2

A-6322 Kirchbichl

Email: stoepflhof@gmx.at

Phone: 0043 664 3504133



Ferienregion Hohe Salve
6300 Wörgl, Innsbrucker Str. 1
AUSTRIA

Telefon: +43 57507 7000
Fax: +43 57507 7020
info@hohe-salve.com
www.hohe-salve.com

UID: ATU44549501
Gerichtsstand: Bezirksgericht Kufstein
Raiffeisenbank Wörgl
IBAN: AT64 3635 8000 0068 9315 / BIC: RZTIAT22358