

Appartement Bergblick | Familie Leitner

holiday apartment in Kirchbichl



Ahornstr. 17 · A-6322 Kirchbichl · leitner.dubichl@aon.at · 0043 664 11 25 947
Additional information at <http://www.bergblick-kirchbichl.tirol>



Ferienregion Hohe Salve
6300 Wörgl, Innsbrucker Str. 1
AUSTRIA

Telefon: +43 57507 7000
Fax: +43 57507 7020
info@hohe-salve.com
www.hohe-salve.com

UID: ATU44549501
Gerichtsstand: Bezirksgericht Kufstein
Raiffeisenbank Wörgl
IBAN: AT64 3635 8000 0068 9315 / BIC: RZTIAT22358

Appartement Bergblick | Familie Leitner

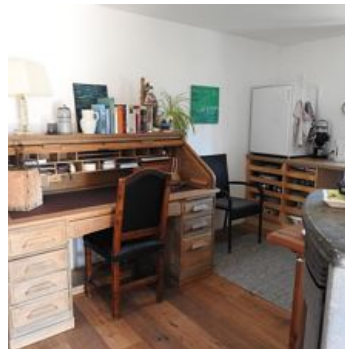
holiday apartment in Kirchbichl

Taking the A12 motorway exit Wörgl Ost you can reach us in a 5-minute drive in the direction of Angath/Mariastein. The converted farmhouse is situated slightly elevated on a terrace at the edge of the village of Kirchbichl. To the north-west and the south, the house is surrounded by fields, only to the east it is facing the adjacent neighbouring plot which is the area to park your car.

On the ground floor of the house there is the apartment Bergblick. The entrance lies to the west. In front of the house there's a terrace and a garden area for joint use. The house is sunlit all day long so you can enjoy the rays of sunshine from the terrace until sunset. The view of the mountains is clear and an amazing treat throughout the year.

The town of Wörgl with its diverse shopping facilities can be reached in 5 minutes by car, Kufstein, the district capital, which is famous for its fortress, and the enchanting little town of Rattenberg can be visited after a 15-minute drive. Innsbruck, the c...





central location · quiet location · right on the bike path · on the hiking path · outskirts of town · meadowlands

Rooms and Apartments

Current Offers

Apartment, shower and bath, toilet, 1 bed room



1-2 Personen · 1 Bedrooms · 56 m²

The 56 m² apartment Bergblick is situated on the ground floor of the house and comprises a sitting room made of Swiss pine, bedroom, bathroom and a hallway. There are wooden floors all over the apartm...

ab
€ 70,00

per apartment on 17.06.2021

TO THE OFFER

Conditions

Included: parking

Check in: from 3 p.m.

Check out: till 10 a.m.

Appartement Bergblick | Familie Leitner

holiday apartment in Kirchbichl

Ahornstr. 17

A-6322 Kirchbichl

Email: leitner.dubichl@aon.at

Phone: 0043 664 11 25 947

<http://www.bergblick-kirchbichl.tirol>



Ferienregion Hohe Salve
6300 Wörgl, Innsbrucker Str. 1
AUSTRIA

Telefon: +43 57507 7000
Fax: +43 57507 7020
info@hohe-salve.com
www.hohe-salve.com

UID: ATU44549501
Gerichtsstand: Bezirksgericht Kufstein
Raiffeisenbank Wörgl
IBAN: AT64 3635 8000 0068 9315 / BIC: RZTIAT22358