

Waldhof

farm, farmhouse in Brixen im Thale

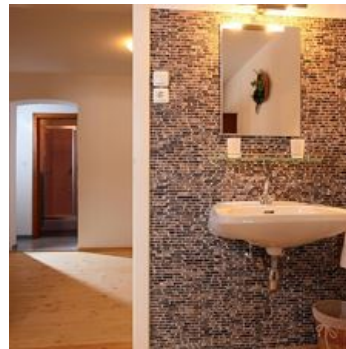


Hinterer Salvenberg 2 · A-6364 Brixen im Thale · **waldhof6364@a1.net** · **+43 664 4061526**

Waldhof

farm, farmhouse in Brixen im Thale

Our farmhouse is situated on the sunny side of Brixen im Thale, surrounded by the Kitzbüheler Alpen. In Summer our farmhouse is the perfect departure point for hikes and cycling tours. Afterwards relax on our beautiful sunbathing lawn or cool down in our newly-built swimming pond! Complete your lengths with breath-taking views! In Winter, our location is in the middle of one of the largest connected ski areas in Austria - the SkiWelt Wilder Kaiser - Brixental.



right on the bike path · private setting · on the hiking path · quiet location · meadowlands · near the forest

Rooms and Apartments

Current Offers

apartment/4 + more bedrooms/bath tub,WC



Cosy apartment with 4 spacious double rooms and 1 smaller twin room, 5 showers, 4 extra WC, balcony with fantastic view, terrace, living room with TV, dining room, beautiful fully equipped kitchen. Br...

ab

€ 3.990,00

per apartment on 21.12.2025

TO THE OFFER

1-10 Personen · 5 Bedrooms · 200 m²

Conditions

Incl: Bed linen, hand towels and tea towels.Exclusive: Bath towels for the swimming pond, bread service, visitor's tax
Free Wlan!

Waldhof

farm, farmhouse in Brixen im Thale

Hinterer Salvenberg 2
A-6364 Brixen im Thale
Email: waldhof6364@a1.net
Phone: +43 664 4061526