

Sonnseit Premium

holiday apartment in Kirchberg in Tirol



Weinberg 14/Top 10 · A-6365 Kirchberg in Tirol · rainer@alpinehosthelpers.com · +436601906700

Sonnseit Premium

holiday apartment in Kirchberg in Tirol

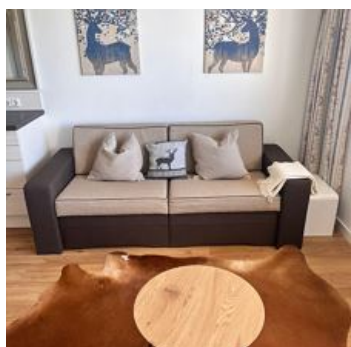
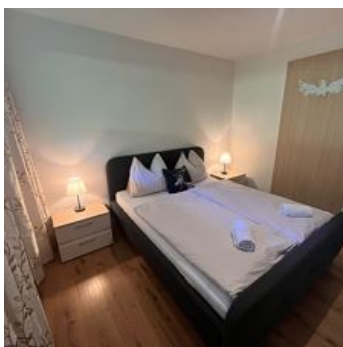
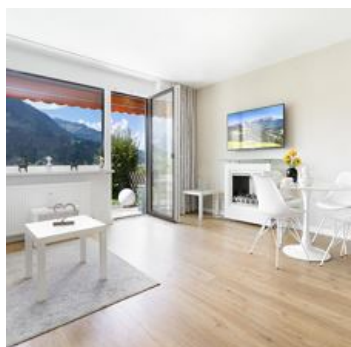
Lovely 1 bedroom apartment on the sunny side of Kirchberg. Fully fitted kitchen, open plan living room with sofa (pull out for extra person) and dining table. You have access to a small garden with amazing views of the surrounding mountains! Bathroom has a shower, toilet, washbasin, washing machine/dryer. Good sized double bedroom with wardrobe, all bed linen and towels are included

WIFI and parking, ski storage cellar are free to use.

For skiers, Pengelsteinbahn(2,100m) Maierlbahn (2,000m) and the Gaisbergbahn (950m) all in the immediate vicinity, as well as being the entrance to the ski area KitzSki.

In summer you have all the hiking, mountain biking, bathing lakes and summer activities right on your doorstep.

The town center is a short walk from the apartment where all the shops, restaurants and bars are located.



mountain location · quiet location · outskirts of town

Rooms and Apartments

Current Offers

Apartment



1-3 Personen · 1 Bedrooms · 60 m²

1 bedroom apartment with sofa bed for extra person. Fully fitted kitchen, living room and dining table, bathroom with shower, washing machine/dryer. Free parking and WIFI. Amazing views! close to ski ...

ab
€ 165,00

per apartment on 21.12.2025

TO THE OFFER

Conditions

Fully fitted kitchen, free WIFI, onsite parking, bedding and towels incl. The center of the village can be reached in 5 minutes on foot or easily in 2 minutes by car, where all bars, restaurants, supermarkets, a bakery, pharmacy and cafes are.

Sonnseit Premium

holiday apartment in Kirchberg in Tirol

Weinberg 14/Top 10

A-6365 Kirchberg in Tirol

Email: rainer@alpinehosthelpers.com

Phone: +436601906700



Silvio Rainer Moellinger

Samantha and Debbi from Alpine Host Helpers will contact you before your arrival to arrange the check in