

Landhaus Zass

holiday apartment in Westendorf



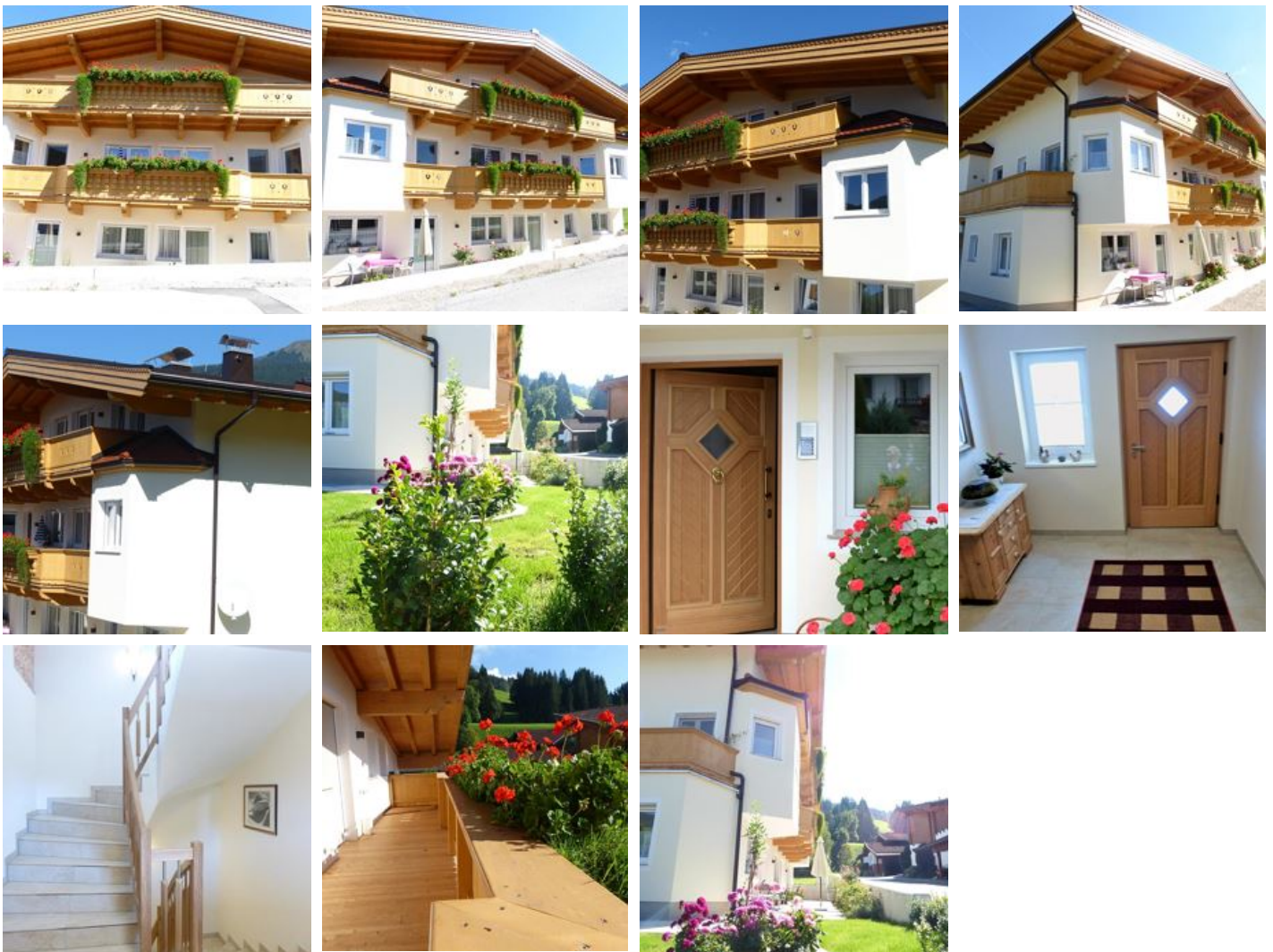
Bergliftstraße 38 · A-6363 Westendorf · evazass9@gmail.com · +43 664 1571505

Additional information at <https://www.kitzbueheler-alpen.com/de/westendorf/unterkuenfte/details/ferienw>

Landhaus Zass

holiday apartment in Westendorf

Our family house is located in a quiet, central location. Only 5-10 minutes on foot to the town center of Westendorf and just 1 minute on foot to the Alpenrosenbahn with direct access to the SkiWelt Wilder Kaiser Brixental. In winter, you can directly enter the cross-country ski trail. Cycling and hiking paths are also right outside the door. Parking spaces are available, and skis and bicycles can be stored for free in the locked garage.



central location · quiet location · right on the slope · near the forest · right at the ski-bus/ hiking-bus/ bus stop · right on the bike path · on the hiking path · right at the cross-country ski trail

Rooms and Apartments

Current Offers

Apartment, shower, toilet, 1 bed room



Bright, comfortable holiday apartment for 2 - 4 persons. Newly furnished living/kitchen area, south/east-facing balcony, cosy Tyrolean country-style bedroom.

ab
€ 140,00

per apartment on 24.04.2026

TO THE OFFER

1-2 Personen · 1 Bedrooms · 45 m²

Apartment, shower, toilet, 1 bed room



Spacious apartment for 2 persons, bedroom, TV, shower and WC. The apartment is located in the cellar of our newly built family house in Bergliftstraße.

ab
€ 70,00

per apartment on 24.04.2026

TO THE OFFER

1-2 Personen · 1 Bedrooms · 40 m²

Conditions

Exclusive: Tourist tax and final cleaning. Inclusive: Bed linen, towels.

Landhaus Zass

holiday apartment in Westendorf

Bergliftstraße 38

A-6363 Westendorf

Email: evazass9@gmail.com

Phone: +43 664 1571505

<https://www.kitzbueheler-alpen.com/de/westendorf/unterkuenfte/details/ferienwohn>