

Hotel Bichlingerhof ****

hotel in Westendorf

88 %

305 Ratings



Bichling 105 · A-6363 Westendorf · hotel@bichlingerhof.at · +43 5334 6326
Additional information at <https://www.bichlingerhof.at/>



Tourismusverband Kitzbüheler Alpen - Brixental
6365 Kirchberg in Tirol, Dorfstraße 11
AUSTRIA

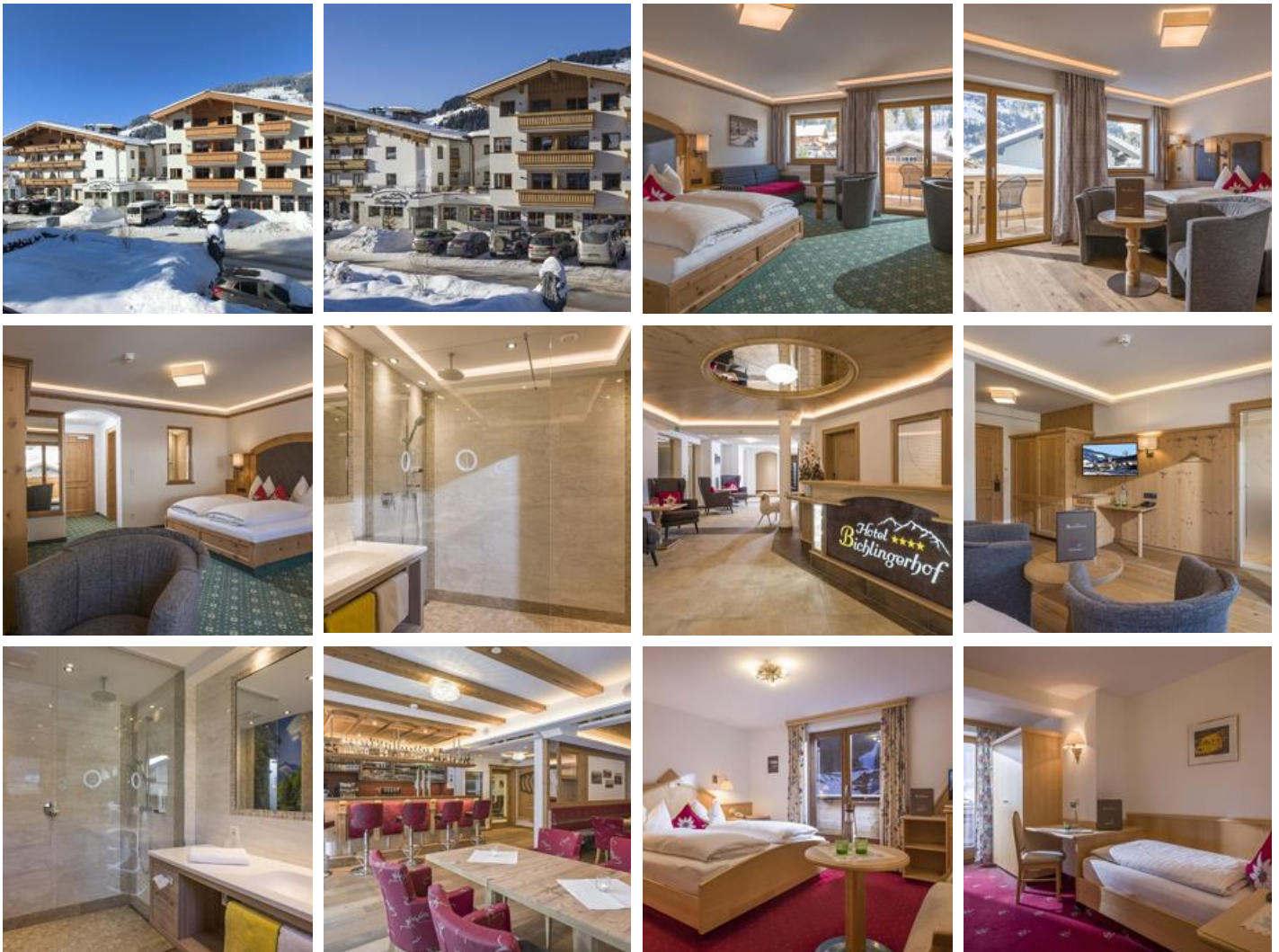
Telefon: +43 57507 2000
Fax: +43 57507 2190
info@kitzbuehel-alpen.com
www.kitzbuehel-alpen.com

UID: ATU42812809
Gerichtsstand: Bezirksgericht Kitzbühel
Raiffeisenbank Westendorf / IBAN AT69 3635 4000 0005 0500 / BIC: RZTIAT22354
Sparkasse Kitzbühel / IBAN: AT12 2050 5005 0000 2811 / BIC: SPKIAT2K

Hotel Bichlingerhof ****

hotel in Westendorf

"Arrive and Feel at Home!" Our family-run house is situated just a 5-minute walk from Westendorf's village centre and yet in a very quiet location! We have comfortable recreational rooms, lift, free WiFi and a ski room with boot and glove dryer. For relaxation, our Wellness area is very inviting with its sauna, steam bath, infrared cabin, kneipp basin and a nice rest room. In Winter the ski bus stops right outside the front door, taking you directly to access the SkiWelt Wilder Kaiser - Brixental with connection to the Kitzbühel/Kirchberg Ski Area! Furthermore, cross-country ski trails, Winter hiking paths and all other recreational activities are in very close proximity! In Summer beautiful hiking and walking trails, cycling and mountain bike routes, mountain adventure worlds and fantastic excursion destinations await you - here in the middle of the Kitzbüheler Alpen! In Winter 2016/2017 we re-open our 4-Star establishment, following renovations and an extension, with one-off spe...



on the hiking path · right on the bike path · right at the cross-country ski trail · right at the ski-bus/ hiking-bus/ bus stop · quiet location · outskirts of town · near the forest · infrared cabin · sauna · Kneipp's facility · relaxation room · steambath · aromatic steam sauna

Rooms and Apartments

Current Offers

double room with shower, bath tube, WC



Approx. 25m², shower and bath, WC separate, balcony, cable-TV, telephone, seating area.

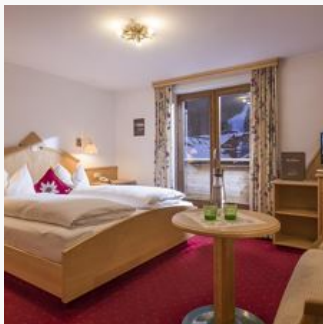
2-3 Personen · 1 Bedrooms · 25 m²

ab
€ 115,00

per person on 20.01.2025

TO THE OFFER

double room with shower, WC



20 m², shower/WC, balcony, telephone, safe, cable-TV, 2 rooms can accommodate an extra bed.

1-2 Personen · 1 Bedrooms · 20 m²

ab
€ 103,00

per person on 20.01.2025

TO THE OFFER

family room with shower, WC



Approx. 25m², double room with inter-connecting door to a single room, shower, WC separate, balcony, cable-TV, telephone, safe, seating area.

ab
€ 115,00

per person on 20.01.2025

TO THE OFFER

2-3 Personen · 2 Bedrooms · 25 m²

single room with shower, WC



Approx. 15m², bright room, private balcony, shower/WC, cable-TV, telephone, safe.

ab
€ 143,00

per person on 20.01.2025

TO THE OFFER

1 Person · 1 Bedrooms · 15 m²

Conditions

Features of the house: comfortable recreational rooms, liftSauna, steam baths, and infrarotInclusive: table tennisSauna daily in Winter and in Summer daily on request!Children's reductions on request!

Hotel Bichlingerhof

hotel in Westendorf

Bichling 105
A-6363 Westendorf
Email: hotel@bichlingerhof.at
Phone: +43 5334 6326
<https://www.bichlingerhof.at/>



Michael Hollaus

Wir die Familie Hollaus (ehem. Eisl) sind eingessene Brixentaler und täglich dafür dankbar, in unserer Heimat auch anderen Menschen Glücksmomente und Erlebnisse vermitteln zu dürfen. Seit der Eröffnung des Bichlingerhof im Jahr 1961 heißt unsere Familie hier in Westendorf Gäste aus aller Welt willkommen und bietet Ihnen ein Zuhause in den Bergen. Was die Vorfahren an Arbeit geleistet und an Gastfreundschaft vorgelebt haben, verdient unseren größten Respekt und ist uns ein Vorbild. Michael mit seiner Frau Monika durften im Jahr 2016 die Führung des Bichlingerhof übernehmen und heißen Sie herzlich willkommen.