

Appartement Alpenlöwe

holiday apartment in Kirchberg in Tirol

95 %

184 Ratings



Einfangweg 4 · A-6365 Kirchberg in Tirol · fneubaeck@hotmail.com · +43 664 4550989



Tourismusverband Kitzbüheler Alpen - Brixental
6365 Kirchberg in Tirol, Dorfstraße 11
AUSTRIA

Telefon: +43 57507 2000
Fax: +43 57507 2190
info@kitzbuehel-alpen.com
www.kitzbuehel-alpen.com

UID: ATU42812809
Gerichtsstand: Bezirksgericht Kitzbühel
Raiffeisenbank Westendorf / IBAN AT69 3635 4000 0005 0500 / BIC: RZTIAT22354
Sparkasse Kitzbühel / IBAN: AT12 2050 5005 0000 2811 / BIC: SPKIAT2K

Appartement Alpenlöwe

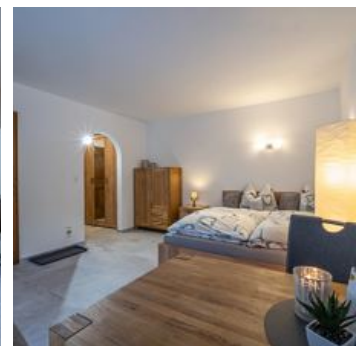
holiday apartment in Kirchberg in Tirol

The Landhaus Alpenlöwe is a third-generation tourist rental, in the immediate vicinity of the ski bus stop and only approx. 600m away from the nearest ski slope. We provide parking spaces for cars and shelters for motorbikes free of charge.

The apartments have their own entrance, an eat-in kitchen with TV and a bathroom.

The 2-toque restaurant Rosengarten and the possibility of a day spa are 50m away.

The toboggan run on the Gaisberg is 750m away and easily accessible on foot via a beautiful hiking trail along the Ach



quiet location · right at the ski-bus/ hiking-bus/ bus stop · on the hiking path

Rooms and Apartments

Current Offers

Apartment, shower, living room/bedroom



Apartment with 35 m²

1-3 Personen · 1 Bedrooms · 35 m²

ab

€ 70,00

per apartment on 19.08.2025

TO THE OFFER

Apartment, shower, toilet, 1 bed room



Apartment 45m²

1-4 Personen · 1 Bedrooms · 45 m²

ab

€ 70,00

per apartment on 19.08.2025

TO THE OFFER

Conditions

The Landhaus Alpenlöwe is a non-smoking house and we ask that you only smoke in the areas with the ashtrays provided.
For the sake of our environment, we ask you to separate your rubbish. Garbage cans are available.

Appartement Alpenlöwe

holiday apartment in Kirchberg in Tirol

Einfangweg 4

A-6365 Kirchberg in Tirol

Email: fneubaeck@hotmail.com

Phone: +43 664 4550989